

S-Lon Beadworking Thread

Similar to Nymo... Better Color Selection... Stronger!

S-Lon is a nylon monocord which is available in 36 lustrous colors & 2 sizes. This parallel fiber thread will fit through a #12 beading needle. It has the feel of Nymo, but comes close to the strength of Power Pro®. It can be used for all kinds of beadwork: Peyote stitch; loom warping; off-loom netting projects & other multi-pass bead stitches. This thread has almost no stretch. Sold in retail-ready tubes of 12, one color per tube, or choose from three different pre-selected color mixes. We've selected several of our most popular colors & pre-packaged them in retail-ready tubes. Mixes are available in both sizes (AA & D). The hangable plastic tubes may also be purchased separately (HPT558, page 216).

Bobbins & Mixes - Available Sizes! (use #'s below to order)

Code	Description
SLAA- + color	Super Lon, Size AA (75 yds.) - Tube of 12
SLD- + color	Super Lon, Size D (78 yds.) - Tube of 12

Size	AA		D	
	75 YARDS	78 YARDS	75 YARDS	78 YARDS
Ash - AS	1	2		
Beige - BG	3	4		
Black - BK	5	6		
Brown - BR	7	8		
Burgundy - BU	9	10		
Capri Blue - CB	11	12		
Charcoal Grey - CG	12	14		
Chocolate - CH	15	16		
Cream - CR	17	18		
Chartreuse - CT	19	20		
Dark Cream - DCR	21	23		
Dark Green - DG	24	25		
Gold - GO	26	27		
Green - GR	28	29		
Grey - GY	30	31		
Golden Yellow - GYL	32	33		
Lavender - LA	34	35		
Light Blue - LBL	36	37		
Light Brown - LBR	38	39		
Light Copper - LCO	40	41		
Light Orchid - LO	42	43		
Assorted Mix (see color listings on right) - MIX1	44	45		
Assorted Mix (see color listings on right) - MIX2	46	47		
Assorted Mix (see color listings on right) - MIX3	48	49		
Olive - OL	50	51		
Orchid - ORCH	52	53		
Orange - ORG	54	55		
Pink - PI	56	57		
Purple - PU	58	59		
Royal Blue - RB	60	61		
Red - RE	62	63		
Rose - RO	64	65		
Sky Blue - SB	66	67		
Seafoam Green - SF	68	69		
Sienna - SI	70	71		
Tan - TA	72	73		
Turquoise Blue - TB	74	75		
Teal - TE	76	77		
White - WH	78	79		

Bobbins & Mixes

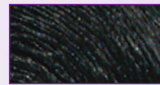
Available in tubes of 12, Size AA (75 yd.) or D (78 yd.)



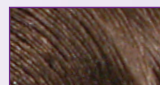
Ash - AS



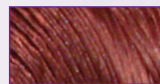
Beige - BG



Black - BK



Brown - BR



Burgundy - BU



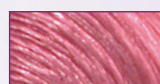
Cream - CR



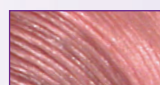
Gold - GO



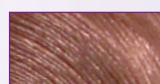
Lavender - LA



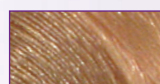
Light Orchid - LO



Pink - PI



Rose - RO



Tan - TA



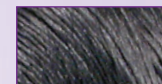
S-Lon Mix 1 MIX1
AS, BK, BR, BU, CG, CH, DCR, GO, LBR, LCO, SI, WH

S-Lon Mix 2 MIX2
CB, CT, DG, GR, GY, LBL, OL, RB, SB, SF, TB, TE

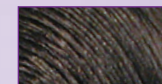
S-Lon Mix 3 MIX3
BG, CR, GYL, LA, LO, ORG, ORCH, PI, PU, RD, RO, TA



Capri Blue - CB



Charcoal Grey - CG



Chocolate - CH



Chartreuse - CT



Dk. Cream - DCR



Dark Green - DG



Green - GR



Grey - GY



Golden Yellow - GYL



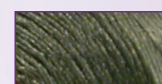
Light Blue - LBL



Light Brown - LBR



Light Copper - LCO



Olive - OL



Orchid - OR



Orange - ORG



Purple - PU



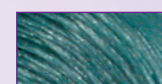
Royal Blue - RB



Red - RE



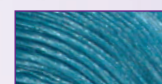
Sky Blue - SB



Sea Foam Green - SF



Sienna - SI



Turquoise Blue - TB



Teal - TE



White - WH

